



ETC International College

# Adult Dates and Fees

## 2025



Courses

Exam Fees

Activities

Accommodation

# Adults

Accredited by the  
**BRITISH COUNCIL**  
for the teaching  
of English in the UK

MEMBER  
**ENGLISH UK**

Private  
Further  
Education

[www.etc-inter.net](http://www.etc-inter.net)

**TRINITY**  
COLLEGE LONDON  
Registered Examination Centre 31075

**LCCI**  
International  
Qualifications

Athena Teacher Training

**IELTS**  
The test  
that sets the  
standard

# Course Dates & Fees

**Minimum  
— age is —  
16**  
September - June

The minimum age for individual students to study at ETC International College is 16 years old between September and June.

Students aged 16 and 17 must have parental permission to study in adult classes.

All lessons are 45 minutes long. ETC specifies a maximum class size of 14, however, where classrooms permit and are suitably equipped, lit, heated and ventilated, we reserve the right to use these rooms to their maximum capacity. No classes will exceed 18 students.

Our average class size in off-peak seasons is lower.

**Classes may be in the mornings or the afternoons during busy periods.**

*ETC may accept students under the age of 16 during these months should there be other students of a similar age in groups and suitable safeguarding and supervision arrangements are in place.*

**Enrolment fee (non-refundable), payable once only: £100 per person.**

## General English

General English	Hours per week	Lessons per week	Cost per week
Standard	15	20	£230
Intensive	18	24	£260
Super Intensive	21	28	£290
Full Immersion	30	40	£460
One - to - One Courses	£70 per 45 minute lesson		

## IELTS Exam Preparation

IELTS Exam Preparation*	Hours per week	Lessons per week	Cost per week
Standard	15	20	£230
Intensive	18	24	£260
Super Intensive	21	28	£290
Full Immersion	30	40	£460
One - to - One Courses	£70 per 45 minute lesson		

**\*IELTS Preparation courses are 15 hours per week. Intensive options include 15 hours exam preparation, plus General English communication skills lessons.**

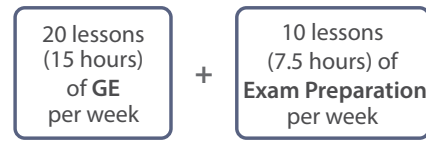
## TOEIC and Cambridge Exam Preparation Courses - Cambridge B2 First / C1 Advanced

B2 First / C1 Advanced	Hours per week	Lessons per week	Cost Per week
Exam Preparation Combined Course	22.5	30	£340
One - to - One Courses	£70 per 45 minute lesson		

TOEIC	Hours per week	Lessons per week	Cost Per week
Exam Preparation Combined Course	22.5	30	£340
One - to - One Courses	£70 per 45 minute lesson		

**TOEIC and Cambridge B2 First and C1 Advanced Exam Preparation courses include 20 lessons (15 hours) per week of General English + 10 lessons (7.5 hours) per week of specialised Exam Preparation.**

It is not compulsory, but students are recommended to start on the term start dates; please see page 6 for dates.



## Books

Books are provided in the classroom for all students to use, free of charge, throughout their course. The books remain the property of ETC. Students may buy their own books if they wish. Workbooks are optional and can be purchased separately.

## Online English

Learn English online with our teachers. We can provide online classes for groups of students for any of our General English, Exam Preparation or Specialist English classes.

Please contact us for a bespoke quotation.

# Specialist English

ETC offers a range of Specialist Courses to equip you with the skills necessary to perform effectively in your particular profession. Whether you are studying or have mastered your profession, we can help to provide you with the linguistic skills required to communicate effectively in your field.



Hours per week	Lessons per week	Cost per week
22.5	30	£340

## Specialist Course Structure

20 lessons  
(15 hours)  
of GE or IELTS  
per week

+

10 lessons  
(7.5 hours) of  
Specialist English  
per week

Students studying 24 weeks on our Specialist English courses will receive a Diploma in the specific subject. Students must be 18 years or older. Please ask for alternative subject areas.

ETC can provide the following Specialist Courses on this structure:

- **English for Accounting, Banking and Finance**

- English for Agriculture
- English for Automotive
- English for Aviation (+ Drone Flight)

- **Business English**

- English for Computing / I.T.
- English for Cyber Security
- English for the Energy Industry (Oil, gas and alternative fuels)
- English for Engineering
- English for the Fashion Industry
- English for Hospitality
- English for HR
- English for International Affairs
- English for Journalism

- **Legal English**

- **Medical English**

- **Military English**

- Nursing English
- English for Public Admin
- English for Security
- English for Taxi Drivers

- **Technical English**

- Tourism English (English for Tourism and Hotel Management)



# Further and Higher Education

ETC International College offers a range of pathways to university. Choose your path based on your current English level and qualifications. You can follow routes to higher qualifications in ETC or apply for university after successfully completing one of our preparation courses.

## Pre-Sessional Course

Prepare for entry to a UK university with one of our Pre-Sessional courses. Pre-Sessional and UFP courses include English, EAP (English for Academic Purposes) and IELTS and give you the academic skills you need for study at a university in the UK or progression to ETC's internationally recognised BTEC HND Programmes.

Pre-Sessional	Duration	Price per course
Pre-Sessional	12 weeks	£4,848

## Univeristy Foundation Programme

University Foundation Programme	Duration	Price per course
UFP Business	24 weeks	£9,696
	36 weeks	£14,544
UFP Computing	24 weeks	£9,696
	36 weeks	£14,544
UFP Technology	24 weeks	£9,696
	36 weeks	£14,544

## BTEC National Diplomas (HND)

BTEC Higher National Diploma	Course Duration	Course Cost
BTEC HND in Business	2 years	£29,366
BTEC HND in Business (Accounting and Finance)	2 years	£29,366
BTEC HND in Business (Human Resource Management)	2 years	£29,366
BTEC HND in Business (Management)	2 years	£29,366
BTEC HND in Business (Marketing)	2 years	£29,366
BTEC HND in Business (Procurement and Supply Management)	2 years	£29,366
BTEC HND in Electrical and Electronic Engineering	2 years	£29,366
BTEC HND in Mechanical Engineering	2 years	£29,366
BTEC HND in Computing	2 years	£33,366
BTEC HND in Computing (Software Engineering)	2 years	£33,366
BTEC HND in Computing (Security)	2 years	£33,366
BTEC HND in Computing (Security)	2 years	£33,366

ETC International College is an approved BTEC centre, offering Level 4 and 5 HND courses. Successfully completing a 2-year HND course enables you to progress to year 3 of an undergraduate degree at a UK university.



## Additional Costs

### Field Trips

Field Trips: costs will be charged as incurred, but will not exceed £200 per annum. Field trips are optional and do not contribute to the overall assessment.

Please see our Higher Education brochure for more information on each course, including entry requirements.

### Books

A range of books are recommended for each course to supplement teaching and are purchased at the discretion of the student.

All courses incur an additional Enrolment Fee (non-refundable), payable once only: £100 per person.

# Professional / Vocational Courses

We can develop training programmes tailored to your business needs, providing training and development opportunities for staff at all levels.

The following are examples of topics we have covered in recent training programmes; we can tailor courses based on your needs:

- | Business Analytics
- | Crisis Management
- | Aviation Management
- | Financial Management
- | Training and Management
- | Cyber Security and Cyber Warfare

**Please contact us for a bespoke quotation.**



## Teacher Training Courses

The **Trinity CertTESOL** qualification enables you to teach English to speakers of other languages. It is used as a benchmark of quality by the British Council for their accredited language schools in the UK and their own teaching operations abroad. It is one of the most widely-recognised qualifications in the industry.

Teacher Training Courses	Course Structure	Total
Trinity CertTESOL Course	8 week course (part-time)	£1,725
Trinity CertTESOL Course	4 week course (full-time)	£1,725
Trinity DipTESOL Course	7 month course (part-time) 2 evenings + 1 Saturday per month	£2,899



The Trinity CertTESOL is a qualification for new teachers of English as a Second Language. The course is accredited by Trinity College London.



# Exam Fees



## Exam Fees

Cambridge C1 Advanced (PB/CB)	£223	TOLES Foundation	£210
Cambridge B2 First (PB/CB)	£220	TOLES Higher	£235
Cambridge KET	£175	TOLES Advanced	£275
Cambridge PET	£180	Trinity SELT	On Request
Cambridge CPE	£215	Trinity College ISE	£180
IELTS	£220	Trinity GESE (Online)	£46 - £105
IELTS UKVI	£235	IELTS Pretrialing	£50

Prices do not include delivery. Please collect your certificate from ETC if possible. Delivery charges may apply if postage is required.

PB = Paper Based,  
CB = Computer Based

Please contact ETC to confirm course and exam dates before booking your return flights or holidays.

Some exams may take place after the end of the exam preparation course.

Cambridge exam courses that start in December include a 2 week Christmas holiday. ETC will be closed at that time.

## Airport Transfers

If you book this service, you will be picked up from the airport and taken directly to your accommodation.

Private Airport Transfer	One Way
London Heathrow Airport	£180
London Gatwick Airport	£200
Luton Airport	£220
Stansted Airport	£270
Bournemouth Airport	£45
Southampton Airport	£100
London Central	£260
Add-ons	
Assisted Check-In	£50
Waiting Charge*	£30 per hour

\*Waiting charges are applied after the first hour and cover the cost of the driver's time and parking charges.

## How can I pay?

Invoices will be in Pounds Sterling. A complete enrolment form should be sent to ETC with full fees. (Please note that the enrolment fee of £100 is non-refundable). Bank Charges must be paid by the sender.

ETC is partnered with Flywire to provide you with an easy and secure method of sending international fee payments by bank transfer, card or e-wallet solutions (including Visa/Mastercard). To pay online using Flywire visit: [www.etc-inter.net/pay-online/](http://www.etc-inter.net/pay-online/)

## Course Dates

Please note that one level normally runs for 12 weeks. Beginners are recommended to start on the term start dates.

ETC will be closed on the following public holiday dates:

### Term Start Dates 2025

6th January

31st March

23rd June

22nd September

### Bank Holidays 2025

18th April

21st April

5th May

26th May

25th August

### Christmas 2024

ETC will be closed on the following dates for the Christmas season:

Last day of term: 20th December 2024

ETC re-opens: 6th January 2025

### Christmas 2025

ETC will be closed on the following dates for the Christmas season:

Last day of term: 19th December 2025

ETC re-opens: 5th January 2026

# Activities

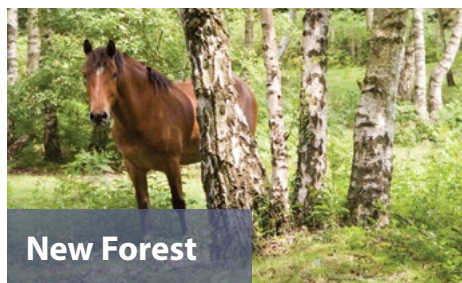
When you choose ETC and Bournemouth as your study destination you will also be choosing one of the most beautiful locations in England!



Bournemouth is one of the most popular holiday destinations on the south coast of the UK and has over 7 miles of sandy beaches for you to explore in your free time.



## Must See Locations



**New Forest**

Ancient hunting ground established by William the Conqueror in 1079, but 1000 years later it has changed very little - the wilderness, heath land and woods are still intact and wild ponies are a common sight.



**London**

The capital of England is one of the most eclectic cities in the world. Big Ben, Buckingham Palace, Trafalgar Square, shopping on Oxford Street; you may need more than one trip!



**Durdle Door**

Perfect for an afternoon walk in the summer. It has 3 fantastic beaches around it and you could even combine this trip with a visit to Corfe Castle for an afternoon to remember!



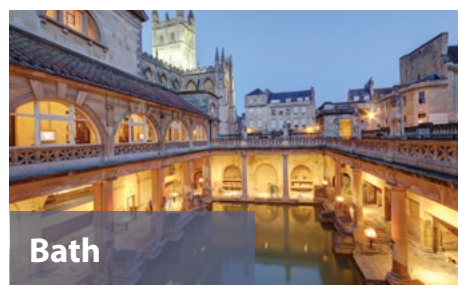
**Corfe Castle**

Corfe Castle is certainly a sight to see, rising out of the mist, jutting into the blue sky, or with water running down its walls. It is impressive no matter how many times you return to visit it.



**Oxford**

One of the most famous University towns in the world, steeped in history and full of stunning architecture. Most recently it was one of the locations for the Harry Potter films.



**Bath**

Known for its natural hot springs and 18th Century architecture, the rolling countryside of Bath promises visitors to the city a great day out. Today's visitors can soak in the waters at the Thermae Bath Spa.

Typical cost per full-day excursion: £45

Typical cost per half-day excursion: £40

# ETC Residence Fees

Available from:

- 24th August 2024 - 13th July 2025
- 24th August 2025 - 5th July 2026

**Age 18+ only | Services include cleaning**

The ETC Student Residence is located right next door to ETC - a very short walk from one building to the next! We have single and twin rooms (offering room only, bed and breakfast or half board, Monday - Friday).

Students who stay in the ETC Residence benefit from not needing to pay for any transport between their accommodation and the classrooms. We offer wireless Internet in all rooms and there are study areas for those who want peace and quiet to work in.

The rooms are checked by a member of staff every day. Linen and towels are included throughout your stay and rooms are cleaned weekly.



Residential Accommodation Fees (subject to availability)	Price per week (low season) (5th January - 24th May 2025 & 31st August 2025 - 4th January 2026)	Price per week (peak season) (25th May 2025 - 13th July 2025 & 24th August 2025 - 30th August 2025)
Shared Room	£155	£175
Single Room	£220	£250
Extra Nights	£40 per night	£55 per night
To include continental breakfast (Monday - Friday in ETC Café)	+ £35	+ £35
To include half board (continental breakfast and cooked lunch, Monday - Friday)	+ £80	+ £80
To include half board with dietary requirements (Monday - Friday in ETC Café) (including lactose intolerant, vegetarian and 'gluten free' options)	+ £100	+ £100

 <b>Shared Kitchen</b>	 <b>Mini Fridge</b> available to hire	 <b>Bike Storage</b> safe and secure	 <b>Private bathroom</b> with shower and toilet
 <b>Cleaning Included</b>	 <b>CCTV</b> and electronic site access	 <b>On-Site Laundry</b> £10 per load	 <b>High-Speed Wi-Fi</b> 12MB, and IPTV

All accommodation is available either:

<b>Saturday</b> to <b>Saturday</b>	or	<b>Sunday</b> to <b>Sunday</b>
--	----	--------------------------------------

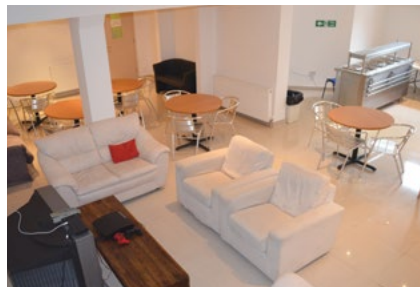
All food is served Monday - Friday  
in ETC's on-site cafeteria

**For full terms and conditions:**

[www.etc-inter.net/  
conditions-of-enrolment/](http://www.etc-inter.net/conditions-of-enrolment/)

A credit card authorisation of £250 is required on arrival to act as a deposit. If no credit card is available, an alternative will be requested. **We require one week of accommodation to be paid at the time of booking.** We can only secure accommodation for the period that has been paid for in full. ETC Residence rules are in place to help all students to enjoy their stay with us and we ask all residents to respect these rules. Failure to respect the rules may result in the student being asked to leave the residence, with no refund payable. No refunds can be given after the student's date of arrival.





# Summer Adult Residence

(Age 18+ only)

Available from 13th July - 24th August 2025 | Services include cleaning

## Summer Residences

Our adult residences consist of apartments with 5 to 9 bedrooms per apartment, making it a great place to meet people of a similar age.

All rooms are single rooms with a private bathroom and a shared kitchen and lounge. The rooms are self-catered and are situated in convenient locations with frequent buses to Bournemouth Town centre and ETC.

Linen and towels are included throughout your stay and rooms are cleaned weekly. Students are responsible for taking out their own rubbish to the refuse collection point to maintain a clean and pleasant living environment for all.

All our summer residences offer modern facilities and are fully furnished with equipped kitchens ready to use.

Single room price per person **£250** per week

A credit card authorisation of £250 is required on arrival to act as a deposit. If no credit card is available, an alternative will be requested. **We require one week of accommodation to be paid at the time of booking.** We can only secure accommodation for the period that has been paid for in full. ETC Residence rules are in place to help all students to enjoy their stay with us and we ask all residents to respect these rules. Failure to respect the rules may result in the student being asked to leave the residence, with no refund payable. No refunds can be given after the student's date of arrival.

Students will be placed in any one of our adult residences depending on availability.



Shared Kitchen



High-Speed Wi-Fi



Study Desk  
and a sofa



Bike Storage  
safe and secure



Private bathroom  
with shower and toilet



CCTV  
and electronic site access



Cleaning Included



On-Site Laundry  
(incurs additional charge)

All accommodation is available either

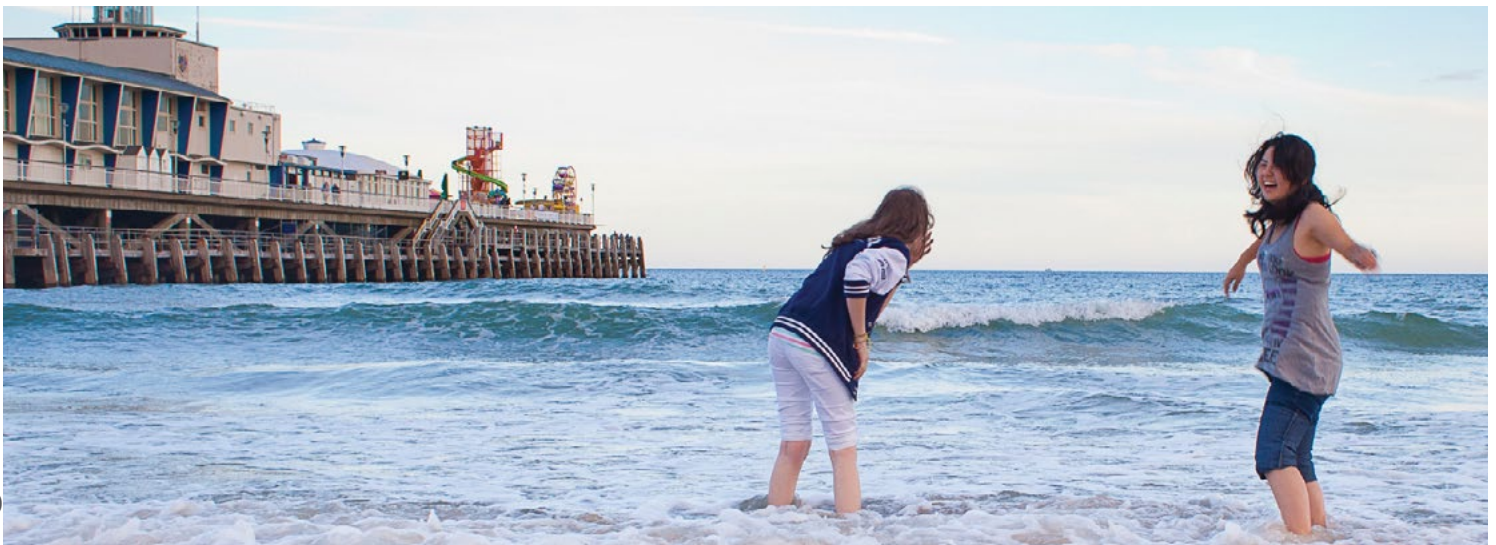
Saturday  
to  
Saturday

or

Sunday  
to  
Sunday

For full terms and conditions:

[www.etc-inter.net/  
conditions-of-enrolment/](http://www.etc-inter.net/conditions-of-enrolment/)



# Homestay Fees

ETC can arrange homestay accommodation for you if you would like to stay with a local family. Many students who come to study at ETC choose this option, because living with a homestay is a good way to practise your spoken English outside the school.

You will have a comfortable, clean room with a desk to study at. Accommodation is half-board during the week (bed, breakfast and evening meal) and full-board at weekends (bed, breakfast, lunch and evening meal). Most of our families live on a local bus route, typically around 20 minutes. Linen and towels are included throughout your stay and rooms are cleaned weekly.

Homestay / Private Home Accommodation (subject to availability)	Low Season (5th January - 24 <sup>th</sup> May 2025 & 31st August 2025 - 4th January 2026)	High Season (25th May 2025 - 30th August 2025)
	Booking fee (one off fee)	<b>£40</b>
Single room (18+ year olds)	<b>£195 / week</b>	<b>£245 / week</b>
Single room (16 & 17 year olds)	<b>£205 / week</b>	<b>£275 / week</b>
During the high season a single room for 16 - 17 year olds is higher due to demand and the extra care our young adults require. These rooms are limited and are offered subject to availability on a first come, first served basis.		
Twin room (only available for pre-arranged pairs)	<b>£175 / week</b>	<b>£205 / week</b>
Extra night	<b>£35 / night</b>	<b>£45 / night</b>
Executive En-Suite	<b>£285 / week</b> (£45 per extra night)	<b>£300 / week</b> (£55 per extra night)
Room Retention Fee (for students going on holiday and would like to reserve their room)	<b>£80 / week</b>	<b>£80 / week</b>
Dietary requirements fee (including lactose intolerant, vegetarian and gluten free options)	<b>£30 / week</b>	<b>£30 / week</b>
Christmas supplement (for students staying over the Christmas holidays: 21/12/2025 - 04/01/2026)	<b>£50 / week</b>	---

## Executive Homestays

Executive homestay accommodation includes single room accommodation with en-suite facilities and free access to the Internet.

All accommodation is available either

**Saturday  
to  
Saturday**

or

**Sunday  
to  
Sunday**

**For full terms and conditions:**

[www.etc-inter.net/  
conditions-of-enrolment/](http://www.etc-inter.net/conditions-of-enrolment/)

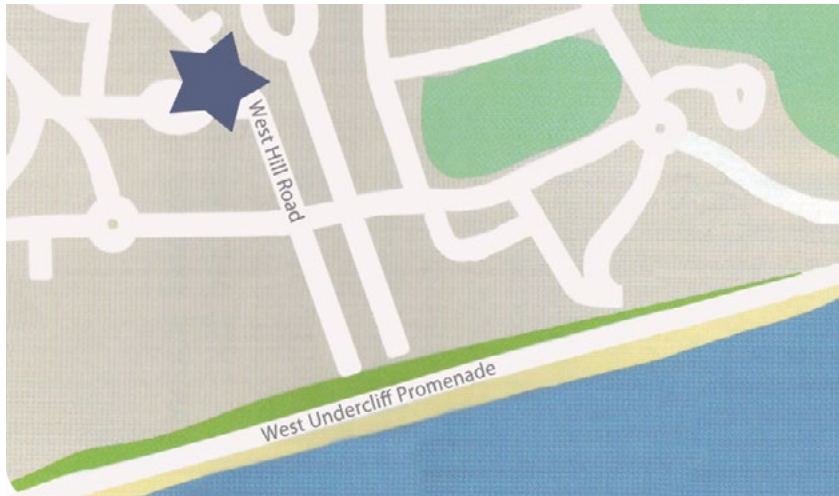
## Private Home Accommodation

This accommodation is for students aged 18+ only. The board and prices are the same as Standard Homestays. With this type of accommodation, it is likely that the ratio of students to host will be higher (usually up to 8 students).

This should not affect the amount of contact time that students have with the host, and students may find they enjoy the social opportunities that occur with being in this type of accommodation.



# ETC in Bournemouth



2 hours from  
London



## Further Information

Prices are correct at time of printing. **Please note prices and policies are subject to change during the year.**

**Always check our website where the latest updates are available.**

Please view our Conditions of Enrolment on our website for full payment information.

FEHE programmes have separate Terms and Conditions and admissions procedures, which can be found on the enrolment page.

## Contact us

ETC International College | 22-26 West Hill Road | Bournemouth | BH2 5PG

Tel: +44 (0) 1202 559 044 | Fax: +44 (0) 1202 780 162

[www.etc-inter.net](http://www.etc-inter.net) | [enquiries@etc-inter.net](mailto:enquiries@etc-inter.net)

04.09.24

